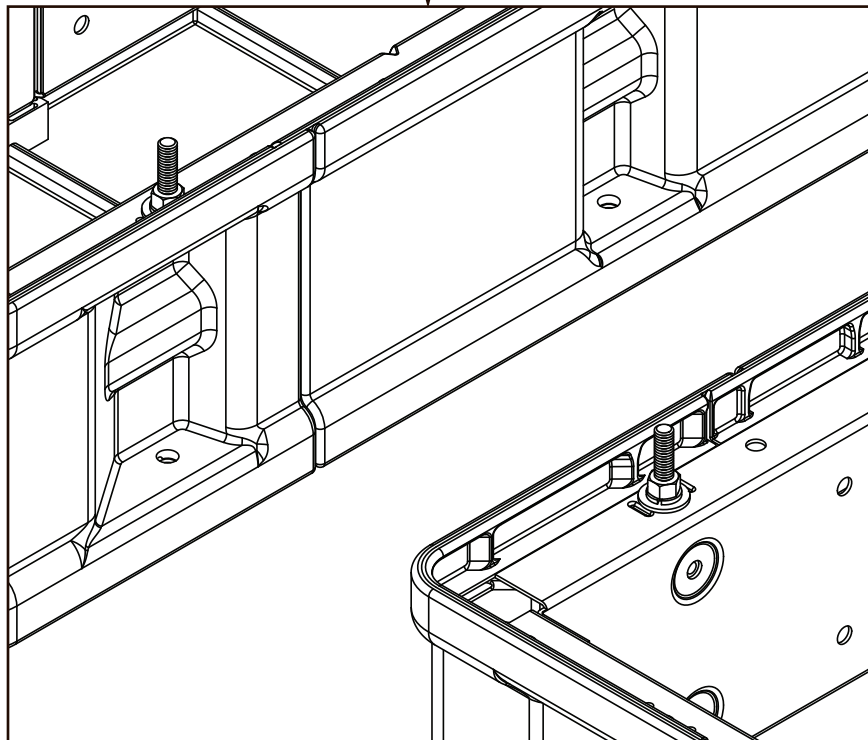
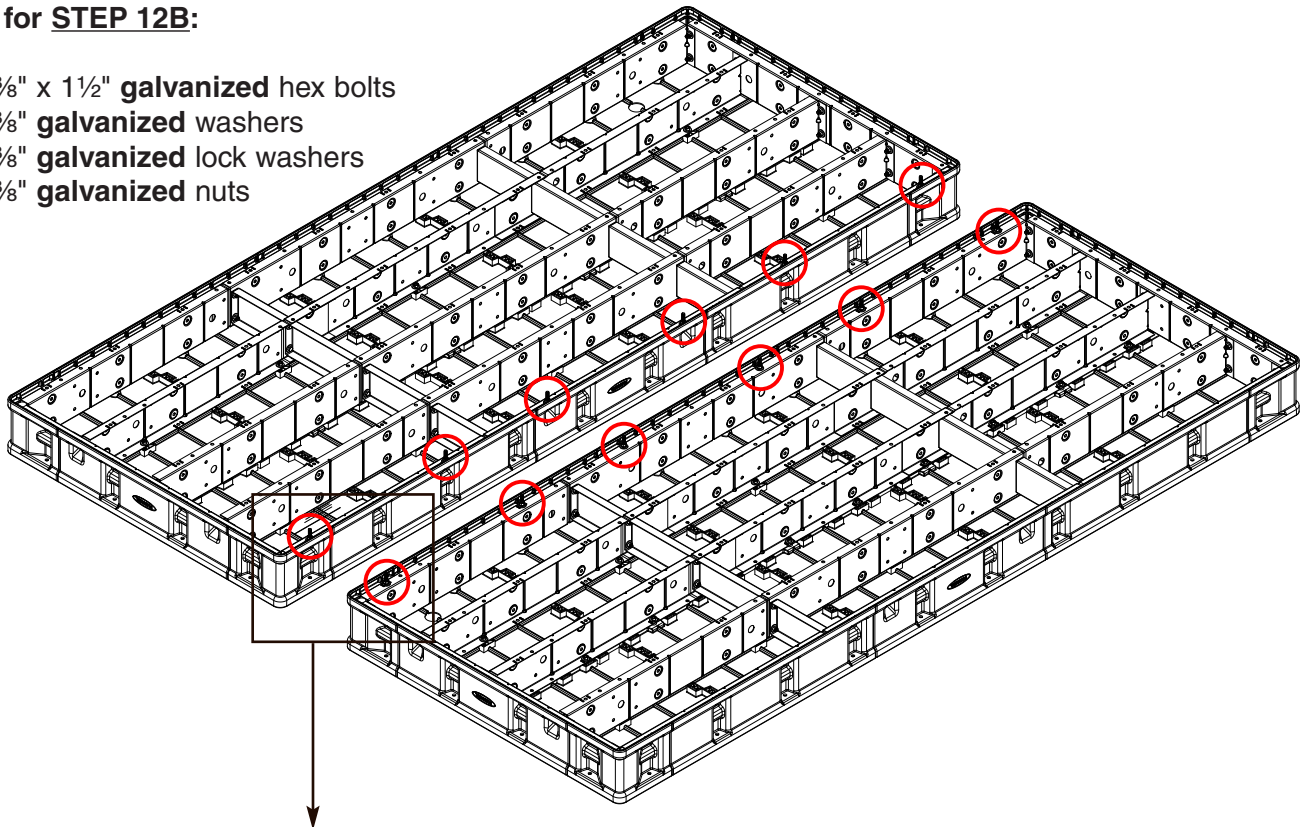


MAKE 8' X 10' FLOATING DOCK SECTION

This insert contains additional steps required to attach two 4' x 10' sections together to make an 8' x 10' Premium Floating Dock Section. Complete up to STEP 12 on Page 20 of your *Premium 4' x 10' Dock Instructions*. Then follow these instructions.

Items for STEP 12B:

- (12) $\frac{3}{8}$ " x $1\frac{1}{2}$ " **galvanized** hex bolts
- (24) $\frac{3}{8}$ " **galvanized** washers
- (12) $\frac{3}{8}$ " **galvanized** lock washers
- (24) $\frac{3}{8}$ " **galvanized** nuts



Flip dock sections over as shown.

Install twelve $\frac{3}{8}$ " x $1\frac{1}{2}$ " **galvanized** hex bolts in the twelve circled locations. **See back page for details. (Fig. 1)**

Secure with $\frac{3}{8}$ " **galvanized** lock washers and $\frac{3}{8}$ " **galvanized** lock nuts.

This will allow you to easily attach the floats from the bottom only at a later step.

Items for STEP 12C:

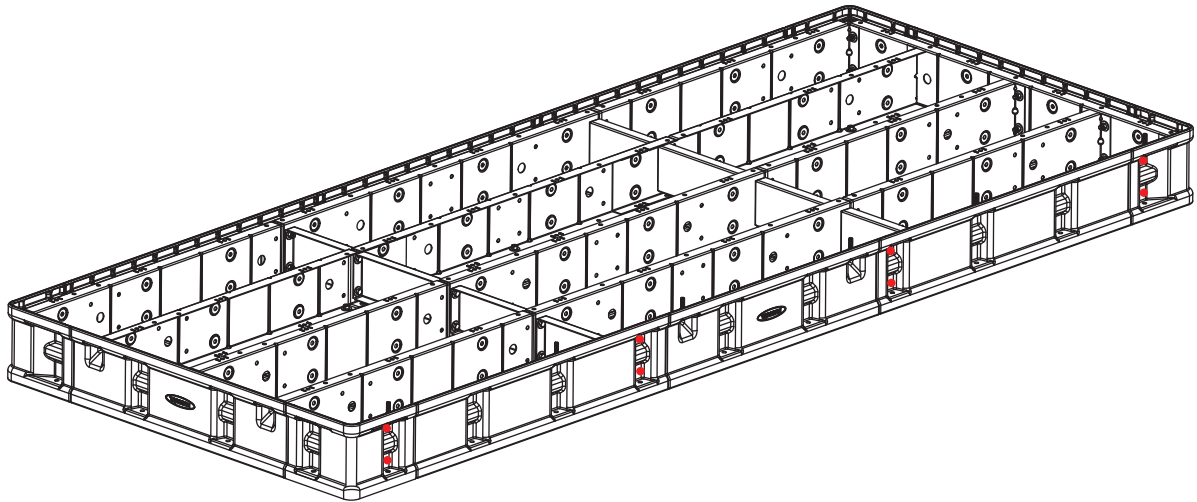
- (8) $\frac{3}{8}$ " x 6" threaded rods
- (24) $\frac{3}{8}$ " **galvanized** washers
- (32) $\frac{3}{8}$ " nuts
- (8) $\frac{3}{8}$ " nylon lock nuts

Drill eight $\frac{3}{8}$ " holes through the resin sides at location shown.

Note: *You could drill from the back side using the holes in the aluminum frame as a guide. However, there is limited space and without a 90° drill it may be difficult.*

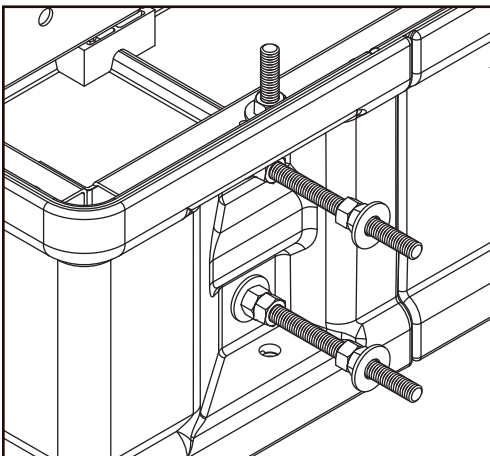
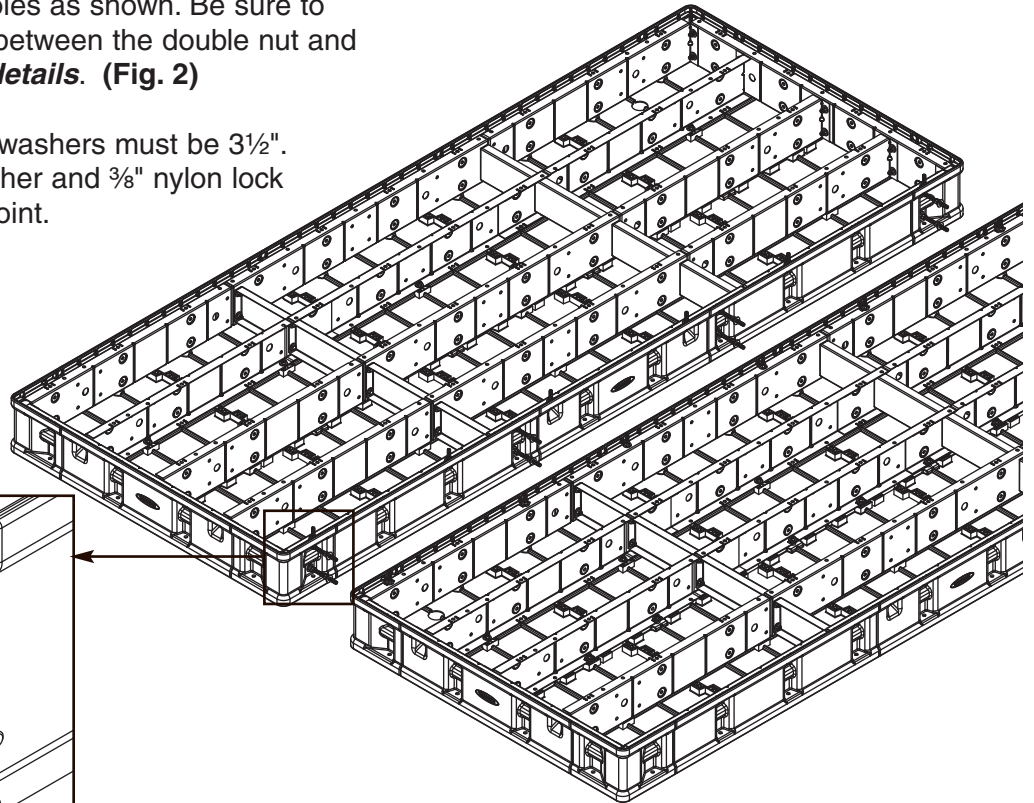
Therefore, you can mark the resin trim on the front side in the approximate locations and drill a small pilot hole to confirm center of aluminum holes. If okay, follow up with $\frac{3}{8}$ " hole directly in line with the holes in the aluminum frame underneath.

Repeat drilling instructions for adjoining 4' x 10' dock section.



Position $\frac{3}{8}$ " threaded rod into holes as shown. Be sure to place a $\frac{3}{8}$ " **galvanized** washer between the double nut and resin side. **See back page for details. (Fig. 2)**

Space between $\frac{3}{8}$ " **galvanized** washers must be $3\frac{1}{2}$ ". Secure with $\frac{3}{8}$ " **galvanized** washer and $\frac{3}{8}$ " nylon lock nut. Finger tighten only at this point.

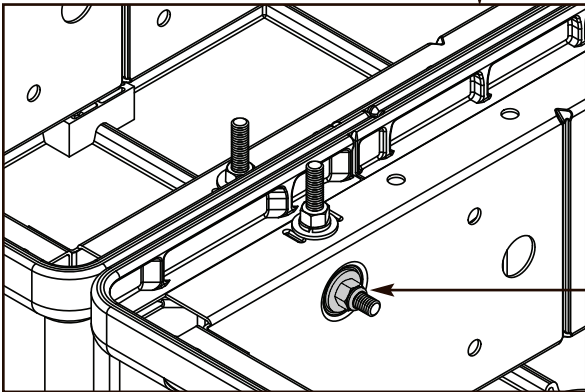
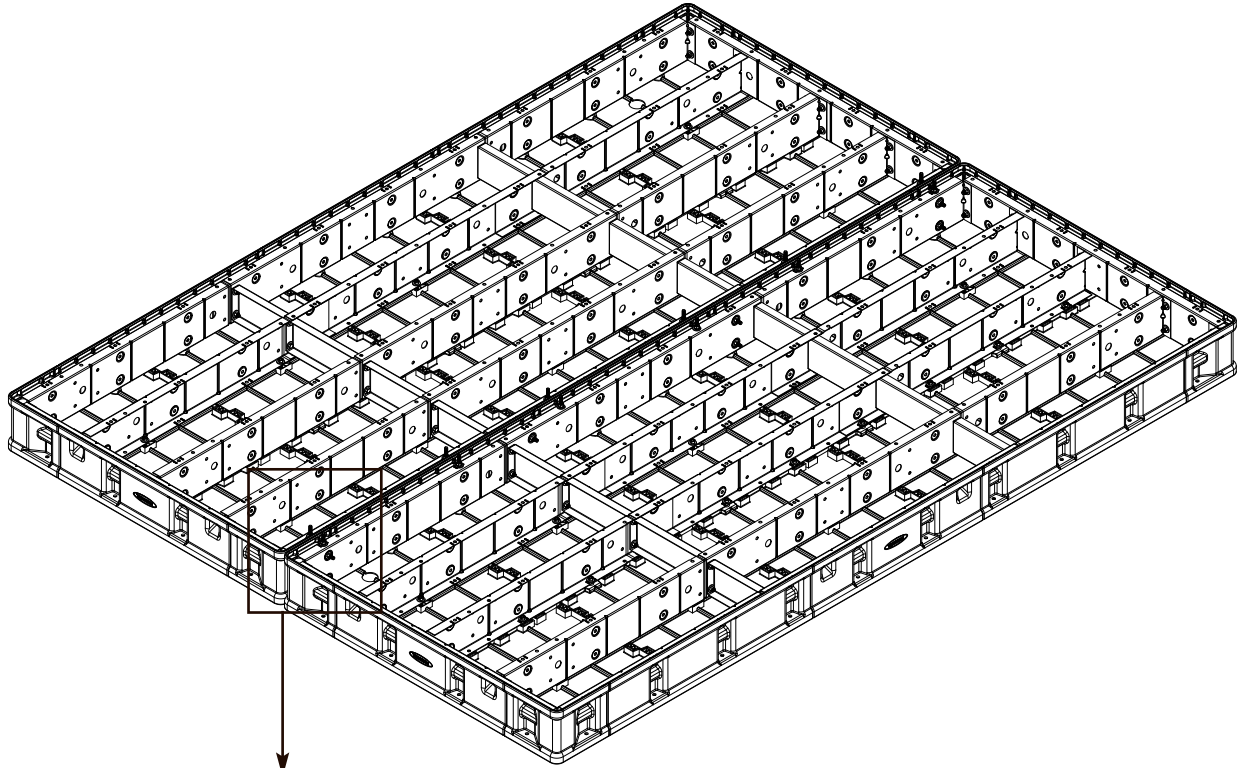


Items for STEP 12D:

- (8) $\frac{3}{8}$ " **galvanized** washers
- (8) $\frac{3}{8}$ " nylon lock nuts

Slide two dock sections together. Insert $\frac{3}{8}$ " threaded rods into second dock. Secure with $\frac{3}{8}$ " **galvanized** washers and $\frac{3}{8}$ " nylon lock nuts.

Once all eight $\frac{3}{8}$ " threaded rods are in place tighten the $\frac{3}{8}$ " nylon lock nuts at both ends of the threaded rod.



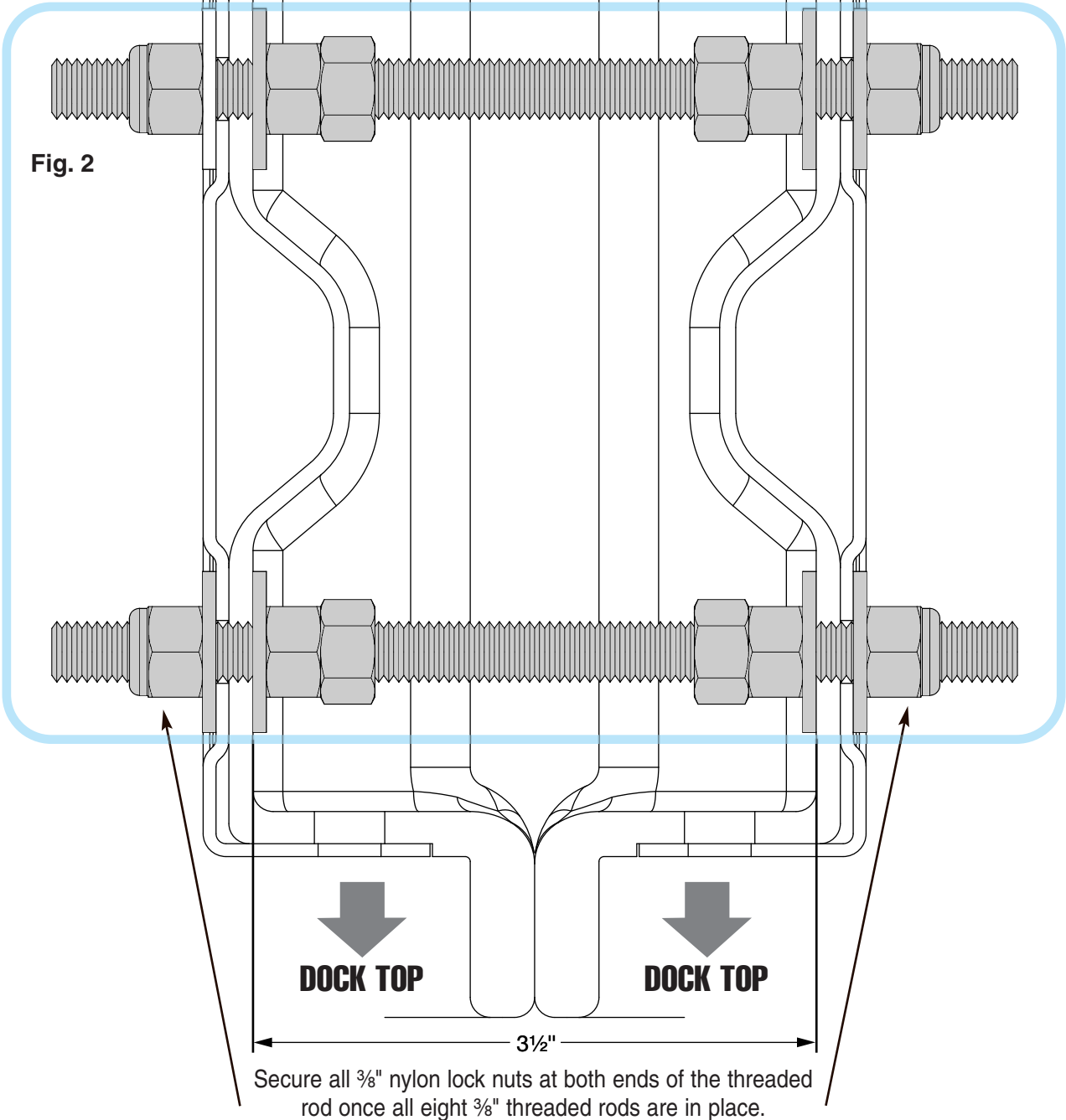
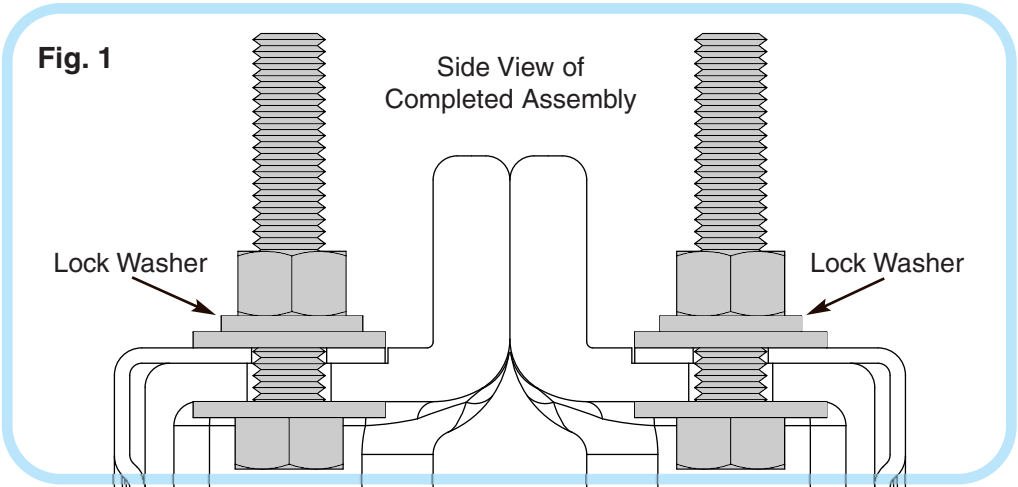
Secure all $\frac{3}{8}$ " nylon lock nuts at both ends of the threaded rod once all eight $\frac{3}{8}$ " threaded rods are in place.

Modification for STEPS 13 & 14:

Keep Dock Sections upside down when following Steps 13 and 14 in the *Premium 4' x 10' Dock Instruction* as you will need to be able to access the $\frac{3}{8}$ " x $1\frac{1}{2}$ " **galvanized** hex bolts to secure the floats where the two 4' x 10' sections are bolted together.

Modification for STEP 14:

Use lock washer & galvanized nuts **in place of** lock nuts for the twelve $\frac{3}{8}$ " x $1\frac{1}{2}$ " galvanized hex bolts.



© 2011 PlayStar, Incorporated. Janesville, WI 53547 Phone: 1-888-752-9782

Reproduction of this document in part or whole is prohibited without the permission of PlayStar, Inc.